

Catholic Cemeteries

WYANDOTTE AND JOHNSON COUNTIES

FALL 2009

FROM THE EXECUTIVE DIRECTOR



It's been another year of tremendous progress for Catholic Cemeteries serving persons in Wyandotte and Johnson Counties.

In early September, we dedicated the new Holy Family Mausoleum at Resurrection Cemetery, Lenexa, Kan. We were very pleased and honored to have Archbishop Naumann bless the new facility and offer the first Mass at that location.

Plans are underway to memorialize the unborn victims of abortion with a monument at Gate of Heaven Cemetery, Kansas City, Kan., in collaboration with the Knights of Columbus William T. Fitzsimmons Assembly. Also at Gate of Heaven, we continue to work on plans for a Veterans Memorial.

We are very excited about the *Pilgrimage at Resurrection* prayer opportunity we have developed (see article, page 3). We hope there will be some seasonal autumn days remaining this year for persons to walk and pray the pilgrimage. This is a great opportunity for youth groups to learn about key elements of our faith, for members of parish organizations to pray together, for individuals to take time for spiritual reflection, and for us to pray for persons buried in our Catholic cemeteries.

We will promote this opportunity more extensively next spring, but the offer is open now to anyone interested in making the pilgrimage at Resurrection Cemetery. Prayer booklets are available weekdays in the office located in the Holy Family Mausoleum.

Planning and coordination of these monuments and special prayer services are over and above our primary focus on helping people make pre-arrangements and at-need arrangements for burial or entombment. We continue to visit parishes throughout the year and encourage individuals of all ages to plan ahead for peace of mind and to ease the burden on their loved ones.

We all know too well that we are mortal, and we believe that our time on earth is preparatory – a pilgrimage, if you will – for greater and lasting glory with God in eternity. We consider it our privilege and our responsibility to help people think about and plan toward this reality and to comfort families as their loved ones make the transition to eternal life.

We hope as you read the articles in this newsletter that you will learn more about Catholic Cemeteries, recognize the extent of our services and contact us for more information.

Thank you,

Robert W. Chenoweth
Executive Director

Archbishop blesses, dedicates new Holy Family Mausoleum



Under the "Family of God" window, Archbishop Naumann (center); Father Spencer (left); Msgr. Applegate (kneeling at right); and the Choral Shepherds of Good Shepherd Parish, Shawnee, Kan.

THE EARLY MORNING SUN INTENSIFIED THE BRILLIANT COLORS OF THE BEAUTIFUL STAINED GLASS WINDOWS DURING THE BLESSING AND DEDICATION OF THE NEW HOLY FAMILY MAUSOLEUM AT RESURRECTION CEMETERY, LENEXA, KAN., ON SATURDAY, SEPT. 5.

The Most Rev. Joseph F. Naumann, archbishop of the Archdiocese of Kansas City in Kansas, blessed the exterior and interior of the mausoleum and celebrated Mass. Assisting were Rev. Msgr. Gary Applegate, master of ceremonies, and Rev. Jeremiah Spencer, vice chairman of the Catholic Cemeteries Board of Trustees. Members of the Choral Shepherds, Good Shepherd Parish, Shawnee, Kan., directed by John Rudzinski, provided music for the celebration. Approximately 150 guests participated in the ceremony.

In his homily, Archbishop Naumann told the gathering that the grasp of God's love is far-reaching, that God remains with people in the midst of suffering and struggles, and that death is not the final answer. "We are not confined by the boundaries of this world," the archbishop said. "Our destiny is to be with the Lord."

CONTINUED ON PAGE 2



Kristi Livingston (left) and Emily Schroeder, both of Good Shepherd Parish, admired a print by Jason Jenicke.

FOR MORE INFORMATION ABOUT ANY OF OUR SERVICES,

call Catholic Cemeteries, 913-371-4040, e-mail us at information@catholiccemeterieskc.org or visit our website at www.catholiccemeterieskc.org.

Catholic Cemeteries Board of Trustees

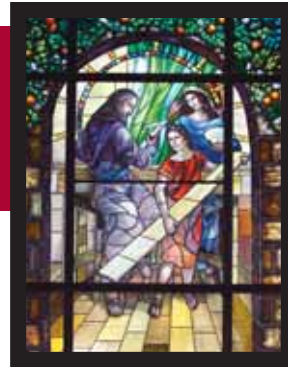
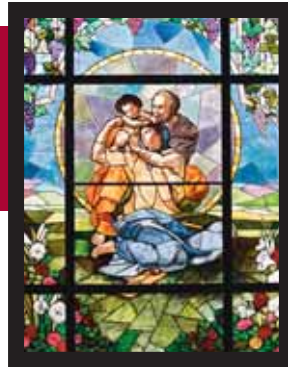
Rev. Ken Kelly, *Chairman*
Rev. Jeremiah Spencer, *Vice chairman*
Robert W. Chenoweth
Rita Lavery
Jerry Mayne
John Thomas

Catholic Cemeteries Staff

Executive director
Robert W. Chenoweth
Family service counselors
Bob DeHaven
John Krumm
Mike Kuban
Karen Ohde
Charlie Owens
Anne Riley
Bill Riley
Tim Streff
Kim Wetzel-Williams
Carla Yarnell
Office support
Carmela Hernandez
Jenny Lancaster
Rose Shaffer
Sharon Vallejo, *manager*
Field operations manager
Jerry Frederes



THE ART OF MAKING STAINED GLASS



It's not too difficult to visualize a painter at her easel with palette and brush in hand bringing the blank canvas alive with color. Or a sculptor walking around a piece of wood with hammer and chisel, pondering where the next cut will be.

But what goes into the design of stained glass windows? What are the steps of this creative process and who's involved in transforming pieces of beautiful glass into incredible works of art?

Catholic Cemeteries has learned answers to these questions well through its experiences with C. Pickel Studio, Inc., Vero Beach, Fla. This 65-year old company designed, created and installed the stained glass windows for the new Holy Family Mausoleum at Resurrection Cemetery, Lenexa, Kan. The work drew praise from participants at the mausoleum dedication ceremony as the sun brilliantly showcased colors of the east-facing windows.



Lyn Durham, master artist, C. Pickel Studio

of lead and mouth blown stained glass. Lyn Durham, master artist with Pickel, was responsible for creative concept development based on input and feedback from Catholic Cemeteries' staff. She had a little help from Michelangelo whose painting of the Holy Family inspired Lyn!

For each of the windows, Lyn first created a scale watercolor paper drawing. Her next step was to do a full-size pencil drawing of each window. This step involved making sure all elements were proportional and took into consideration the flow of where the lead would be.

Drawing in the lead lines followed. Two copies were made using giant carbon paper. One copy on heavy stock paper was cut into pieces to be used for patterns to select the glass. Rosie Pickel, glass color expert, selected artistically appropriate colors to reflect the shadows and other effects Lyn wanted to convey.

The blown glass used by Pickel Studio came from Europe. Lyn described it as "clear as water, sparkling, and like working with gems."

Assembling the artistic puzzle

Skilled craftsmen cut the glass to fit the patterns. Faces, hands, arms and legs were cut from clear glass so that Lyn could personally paint them for each window. At this point, the process resembled putting a puzzle together as the pattern pieces were placed with beeswax on panels of clear glass. (Working in panel sections allows ease of handling and firing.) Beeswax went into the cracks between the pieces where the lead would eventually go.

Lyn painted features and faces and then fired the glass pieces several times in kilns at 1,275 degrees to obtain desired effects and colors. "Every time we fire the glass, the paint becomes part of the glass," she explained, "and we get the character we want."

The delicate glass - ranging only from one-eighth to one-fourth of an inch in thickness - was then fitted into the strips of lead. Artisans applied reinforcement methods to ensure stability of the glass within the lead.

Labor of love

A team from the Vero Beach studio carefully packed the panels of the stained glass windows, transported them and installed the windows in the Holy Family Mausoleum.

It was a labor of love with artistry in every step.

"Everybody here [at the studio] is an expert," Lyn commented. "These are all wonderful people, and we work well together."



Paul Pickel

"Although we view each window in the studio prior to installation," Paul Pickel, president of the studio, who attended the dedication ceremony, said, "there can be a tremendous sense of awe when entering a new building and seeing our successful window creations in their complete and proper settings for the first time. This was certainly the case at Holy Family Mausoleum in Resurrection Cemetery."

Inspired by Michelangelo

The windows all begin with rough sketches and finish with carefully handcrafted panels

Contacting Catholic Cemeteries

We've recently upgraded our telephone system and encourage you to use these frequently called numbers for direct contact with staff:

- Burial arrangements 913-371-4040
- Memorial orders and designs . . 913-344-7506
- General information 913-344-7505
- Business manager 913-344-7501
- Client accounts 913-344-7502
- Executive director 913-344-7500

Also, to make sure that items mailed to Catholic Cemeteries arrive in a timely manner, please use our P.O. box number:

Catholic Cemeteries
P. O. Box 2327
Kansas City, KS 66110-0327

Send us your email address

Send your name and email address to us at information@catholiccemeterieskc.org.



This will allow us to communicate with you periodically and to conserve paper and postage in the future.

Thank you.

Holy Family Mausoleum CONTINUED FROM PAGE 1

The archbishop prayed that the new mausoleum would be a place of consolation and comfort for families. He acknowledged the work of Catholic Cemeteries' staff in their upkeep and ongoing improvements to the seven cemeteries they manage and maintain in Wyandotte and Johnson Counties.

Robert W. Chenoweth, Catholic Cemeteries' executive director, explained that space limitations in two other mausoleums at Resurrection Cemetery prompted construction of the new facility. He said that this enhancement to the cemetery was part of Catholic Cemeteries' commitment to perpetual maintenance and beautification of the properties it manages.

Artisans every step of the project

C. Pickel Studio, Inc., Vero Beach, Fla., designed and crafted the stained glass in the new mausoleum. On entering the mausoleum, a visitor faces the east wall and a panoramic view of the "Family of God" stained glass window. The mausoleum has three large stained glass windows with scenes from the life of the Holy Family (see photos top of page) and a rose window of the "Lamb of God" over the entry way.

Cemetery Development Associates of Covington, La., designed and engineered the mausoleum. Hartung Construction, Lenexa, Kan., was general contractor. The new facility has 1,227 interior and exterior crypts, 70 glass-front cremation niches and a limited number of wooden-shuttered couch crypts. The mausoleum also features carvings of the Holy Family on walls of the exterior entrance. Johnson Granite Supply of North Kansas City, Mo., designed these carvings in granite.

To add to the beauty of the location, Wayne and Jeri Jenicke, Kansas City, Kan., donated three prints of the Holy Family from paintings by their son Jason Jenicke, Divine Images, Lawrence, Kan. Wayne Jenicke is former executive director of Catholic Cemeteries. The prints are displayed in the office area of the new mausoleum.



Archbishop Naumann greeted Matt Hartung, general contractor for the project.

You are invited to make the 'Pilgrimage at Resurrection'

PEOPLE TRAVEL MILES AND SPEND MANY DOLLARS TO VISIT HOLY SHRINES AROUND THE WORLD. CATHOLIC CEMETERIES IS OFFERING THE *PILGRIMAGE AT RESURRECTION* AS A LOCAL, PRAYERFUL OPPORTUNITY AND A NO-COST ALTERNATIVE TO LONG-DISTANCE TRAVEL.



Queen of Heaven Memorial

With a number of beautiful outdoor and indoor monuments and memorials, Resurrection Cemetery presents an ideal setting for a pilgrimage, said Robert W. Chenoweth, executive director of Catholic Cemeteries. "We've created a pilgrimage route and an accompanying prayer booklet," Bob explained, "that can be followed and used by individuals or groups."

The pilgrimage starts outdoors at the Infant of Prague Memorial and progresses to nine additional stops including the Queen of Heaven Garden, the Ascension Memorial, Our Lady of Lourdes and others. The prayer booklet provides prayers for each pilgrimage site and a description

of the meaning of each memorial. "We suggest that persons making the pilgrimage," Bob added, "pray the rosary between stops along the way and pray for the deceased buried in our Catholic cemeteries."

Bob estimated that making the pilgrimage would take approximately one to one and a half hours - depending on each individual's pace. Seven of the memorials are outdoors; three, indoors. The pilgrimage concludes inside the new Holy Family Mausoleum.

To make the pilgrimage, individuals can stop by the Catholic Cemeteries' office in the Holy Family Mausoleum at Resurrection Cemetery, 83rd and Quivira Road, Lenexa, Kan., during weekday business hours. Groups are asked to contact Catholic Cemeteries in advance to arrange the pilgrimage by calling 913-371-4040 or emailing information@catholiccemeterieskc.org.



IN SUPPORT OF CATHOLIC CEMETERIES' MISSION

Job a 'right fit'



It was an emotional experience entering the Catholic Cemeteries' office to apply for the job **CARMELA RANK HERNANDEZ** now holds. The last time she had been in the office was with her husband to plan his burial arrangements. He died from cancer in 2000.

The minute she completed the interview, however, Carmela said that she knew the Catholic Cemeteries' office assistant job was the right fit for her. "I've experienced losing someone," she said, "and I know what it's like to go through the process."

Carmela also was impressed that Catholic Cemeteries is a much larger organization than she realized - seven cemeteries total - and that the organization is "growing and moving." One of her first extra assignments was to help welcome guests to the dedication and blessing of the new Holy Family Mausoleum at Resurrection Cemetery, Lenexa, Kan.

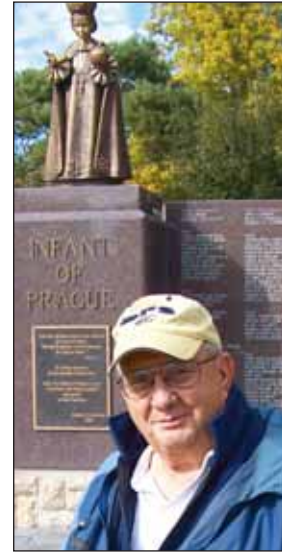
Eventually, Carmela will work in the new office at Resurrection. In her role at the 38th and State Avenue office in Kansas City, Kan., Carmela orders monuments and is currently helping computerize records for pre-need arrangements.

Carmela is a lifelong resident of Kansas City, Kan., and the Cathedral Parish. She's been a very active volunteer in the parish. Carmela sings in the choir and in the past was a member of the Archdiocesan Choir. She is a member of the parish Altar Society. Carmela and her family prepare the Mexican food at the Cathedral annual ice cream social - one of the top revenue-producing booths!

Family is very important to Carmela who has three children and two grandchildren. She also enjoys going to the lake, gardening and remodeling.

Pride of ownership

TOM WALICZEK ranks his work on the Infant of Prague Memorial at Resurrection Cemetery, Lenexa, Kan., as one of the most meaningful things he's ever done as a craftsman. Doing the stone and concrete work for this memorial for children who have died was both sad and uplifting, Tom said. He and his crew members would stop their work when a funeral was in progress nearby. Other times, Tom recalled a feeling of comfort that the kids buried in this section of the cemetery were keeping him company on the job.



Pride of ownership has accompanied Tom's other work for Catholic Cemeteries - primarily at Resurrection. The self-employed contractor set the footings and foundation for the Memorial to the Unborn. With the exception of the actual granite monuments (designed by Johnson Granite), Tom completed all other work for the Veterans Memorial - including installing outdoor lighting and planting bushes! He also did finish work on the Ascension and Assumption Memorials. At Mt. Calvary Cemetery, Kansas City, Kan., Tom laid the footings for the Our Lady of Guadalupe Memorial.

Most recently, Tom worked on the new Holy Family Mausoleum at Resurrection. He assembled and did electrical work for the glass front cremation niches. He also did finish work to the walls around the carvings on the face of the building.

Tom has been a self-employed contractor since 1980. Early in this career, he began doing projects for the archdiocese. Over the course of time, Tom also served six years on the Catholic Cemeteries Board of Trustees - his first formal introduction to the operations of the organization. His second term expired in 2003.

A few years later, Tom "received a call out of the blue" from Bob Chenoweth, Catholic Cemeteries' executive director, asking him to spec a job. Since then, Tom has remained part of the Catholic Cemeteries' team of independent contractors who support the organization's Mission.

Except for his two-year stint in the U.S. Army, Tom and his wife of 46 years have lived in the Strawberry Hill area of Kansas City, Kan. They are members of All Saints Parish.

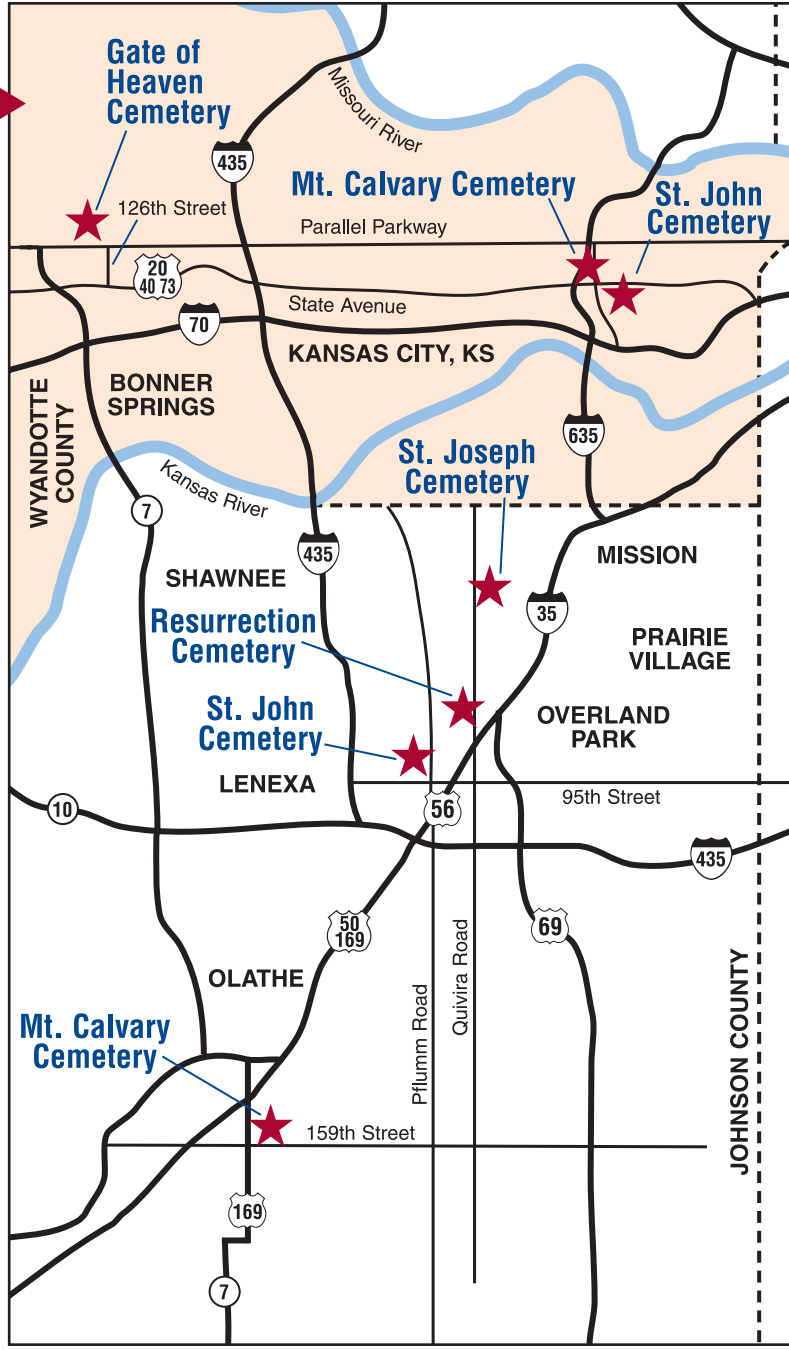
Editor:
Therese Horvat
WTGG Consulting

Designer:
Rosie Holderby
Cole Design & Production

CATHOLIC CEMETERIES LOCATIONS

Office and more information
913-371-4040
information@catholiccemeterieskc.org
www.catholiccemeterieskc.org

- **St. John Cemetery**
36th and State Ave.
Kansas City, Kan.
- **Mt. Calvary Cemetery**
38th and State Ave.
Kansas City, Kan.
- **Resurrection Cemetery**
83rd and Quivira
Lenexa, Kan.
- **Mt. Calvary Cemetery**
158th and S. Hwy. 169
Olathe, Kan.
- **St. John Cemetery**
89th and Pflumm
Lenexa, Kan.
- **St. Joseph Cemetery**
61st and Quivira
Shawnee, Kan.
- **Gate of Heaven Cemetery**
126th and Parallel
Kansas City, Kan.



UPDATES ON MEMORIALS

At Gate of Heaven

Plans are progressing to develop a memorial to unborn victims of abortion at Gate of Heaven Cemetery, 126th and Parallel, Kansas City, Kan. Catholic Cemeteries is working with the Knights of Columbus William T. Fitzsimmons Assembly on this project. The memorial will be located in the southwest sector of the cemetery.

At Resurrection

The painting of the outdoor Assumption Memorial has been replaced with colorful mosaic artwork. The surrounding granite has been repaired to update the memorial.



Remember a Veteran with a wall engraving

Remember a Veteran – living or deceased – by having his/her name engraved on the walls between the monuments or on a paver stone of the Veterans Memorial at Resurrection Cemetery. Several panels have names engraved as tokens of appreciation by family and friends. Room remains for additional names. Call 913-371-4040 or email information@catholiccemeterieskc.org for more information and donor opportunities.



4	Updates on Memorials
3	In support of Catholic Cemeteries' Mission
3	You are invited to make the 'Pilgrimage at Resurrection'
2	Contacting Catholic Cemeteries
2	The art of making stained glass
1	Archbishop blesses, dedicates new Holy Family Mausoleum

What's inside

CATHOLIC CEMETERIES
P.O. Box 2327
KANSAS CITY, KS 66110-0327



Non-Profit Org.
U.S. Postage
PAID
Permit No. 216
Kansas City, KS